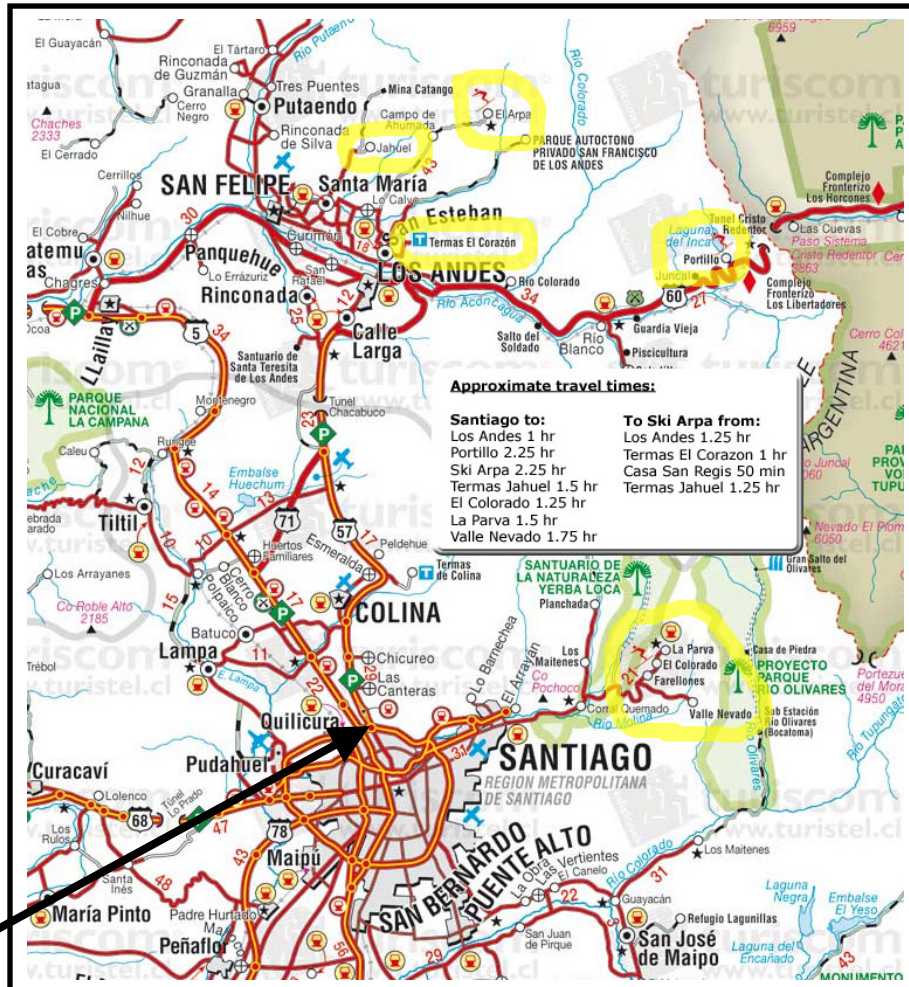




Driving Directions to Ski Arpa from Santiago



Distance (km)	Total distance	Location
0	0	Exit from Americo Vespucio to Highway 57 in the direction of Los Andes
6.6	6.6	Toll Plaza Chicureo
36.9	43.5	Toll Plaza Chacabuco
13.3	56.8	Exit for Calle Larga. Bear to the right off exit. Go to end of ramp and turn right.
8.1	64.9	Continue straight until reaching the Los Andes Traffic Circle. Turn Right.
0.5	65.4	Avenida Argentina, Los Andes. At the second stop light, after the traffic circle. Turn left.
1.7	67.1	YPF Gas Station. Last gas until return trip (60 kilometers).
0.8	67.9	Small traffic rotary continue straight
1.1	69	San Esteban Plaza de Armas. Continue straight
2.2	71.2	T Crossing with Virgin Mary Statue. Turn Left.
0.8	72	Drive past large adobe red wall at Hacienda Casa San Regis. Continue straight.
1.4	73.4	Turn Right just after abandoned greenhouses on right hand side of road
2.7	76.1	Small river crossing road. Continue straight.
11.4	87.5	End of Pavement. Continue straight.
1.1	88.6	Campos de Ahumada. Turn Right.
0.2	88.8	Bottom of Ski Arpa Road. Turn left
7	95.8	Gate on switchbacks. Continue Straight.
2	97.8	Ski Arpa base area - "Rancho Avalancho"